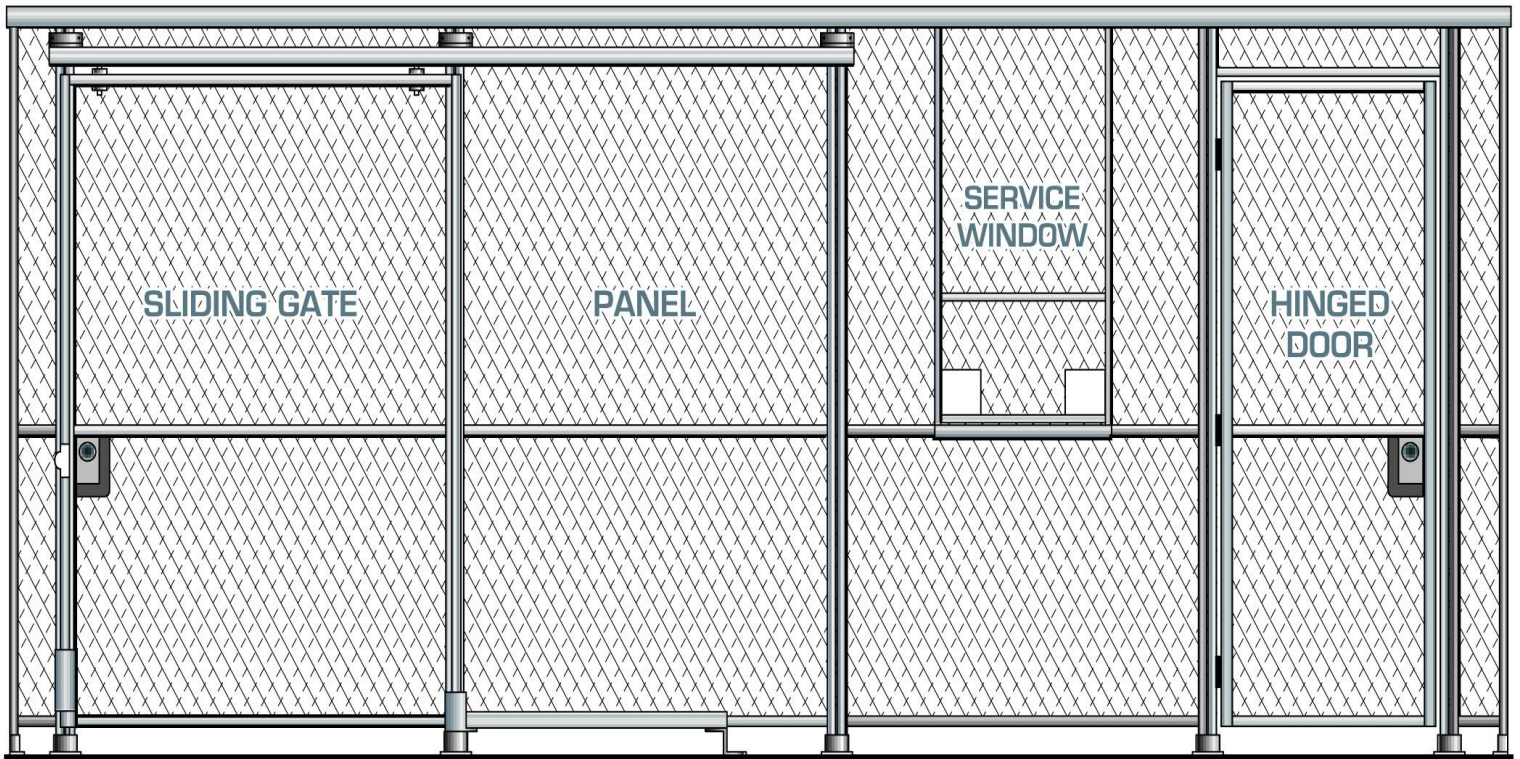


# NEWARK WIRE WORKS INC.



## Wire Mesh Partitions

For:

Storage Rooms

Server Cages

Storage Areas

Tool Cribs

Co-Location Cages

Security Enclosures

And more...

# Wire Mesh Partitions



Wire mesh partitions manufactured and installed by Newark Wire Works are unsurpassed in rigidity and quality. They offer a large percentage of open area for clear ventilation, light diffusion, sprinkler coverage and visibility. There's unobstructed view of the interior of the enclosure at all times while still providing security to the contents of the entire enclosure.

Hinged wire mesh doors are available with mortise cylinder locks, hasps for padlocking, electric strikes or electro-magnetic locks (mag-locks) for card access, panic bars and combination locks.

Wire mesh sliding gates (wire mesh sliding doors) are available with mortise cylinder locks, hasps for padlocking and electro-magnetic locks (mag-locks) for card access.

Our woven wire mesh partitions can also be provided with wire mesh ceilings.

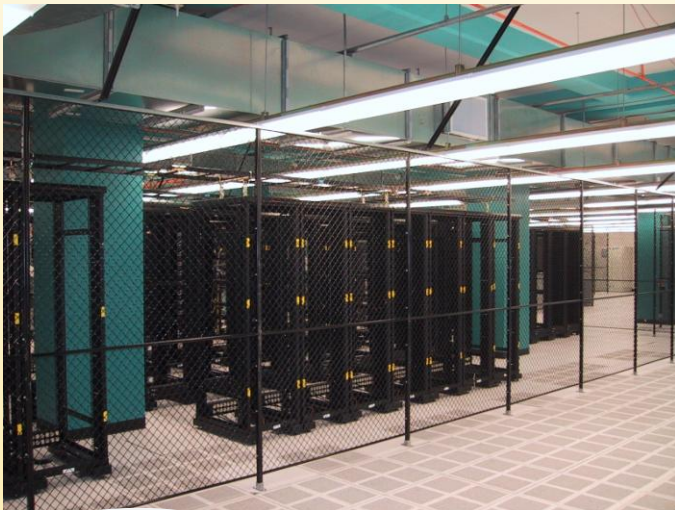
Wire mesh ceilings can also be provided above existing masonry or gypsum board walls for added security within your facility.

Newark Wire Works wire mesh partitions are available in different alloys. We manufacture stainless steel wire partitions, aluminum wire partitions as well as our carbon steel wire partitions. The wire mesh panels, doors, gates and ceilings are finished with an alkyd base enamel paint, polyester powder coat or hot dip galvanized to your specification.



# Wire Mesh Partitions Specifications

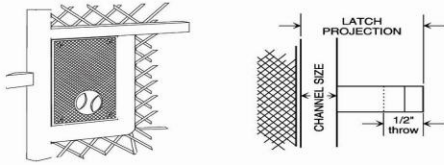
MODEL NO.	STANDARD DUTY 120	HEAVY DUTY 125	DETENTION/ PSYCHIATRIC 150	MAXIMUM SECURITY 180	
MESH TYPE	1 1/2" Diamond	2" Diamond	2" Square	2" Square	
WIRE/ROD	10 ga. (.135")	6 ga. (.192")	1/4" dia. (.250")	3/8" dia. (.375")	
CRIMP STYLE	— Intermediate Triple Crimp —		— Lock/Press Crimp —		
P A N E L	Vertical Channel Frames	1 1/4" x 5/8" x 13 ga.	1 1/2" x 3/4" x 11 ga.	2" x 1" x 11 ga.	3" x 1 3/4" x 11 ga.
	Vertical Flat Stiffener (If Required)*	8'-10' ht. 5/16" x 1 3/4"	7'-12' ht. 5/16" x 2 1/2"	7'-12' ht. 5/16" x 3"	7'-12' ht. 3/8" x 4"
		11'-16' ht. 5/16" x 2 1/2"	13'-18' ht. 5/16" x 3"	13'-18' ht. 5/16" x 3 1/2"	13'-18' ht. 3/8" x 5"
	Horizontal Channel Frames	1" x 1/2" x 11 ga.	1 1/2" x 3/4" x 11 ga.	2" x 1" x 11 ga.	3" x 1 3/4" x 11 ga.
	Center Horizontal Stiffener**	3/4" x 3/8" x 11 ga.	1" x 1/2" x 11 ga.	1 1/2" x 3/4" x 11 ga.	1 1/2" x 3/4" x 11 ga.
Top Capping Channel	2 1/4" x 1" x 13 ga.	3" x 1 7/16" x 1/8"	4" x 1 9/16" x 5.4 lb.	4" x 1 9/16" x 5.4 lb.	
D O O R	Channel Frames	1 1/4" x 5/8" x 13 ga.	1 1/2" x 3/4" x 11 ga.	2" x 1" x 11 ga.	3" x 1 3/4" x 11 ga.
	Capping Flat	1/8" x 1 1/4"	1/8" x 1 1/2"	1/8" x 2"	1/8" x 2 1/2"
	Hinges (Fixed Pin) 3/Door	4" x 3" x .120	4" x 4" x .125	Folger Adam 4 1/2 FM	Folger Adam 4 1/2 FM
	Lock	Marks 3700 Series		Folger Adam 80 Series	
S L I D I N G G A T E	Channel Frame	1 1/2" x 3/4" x 11 ga.		2" x 1" x 11 ga.	3" x 1 3/4" x 11 ga.
	Capping Flat	1 1/2" x 1/8"		2" x 1/8"	2 1/2" x 1/8"
	Top Box Track	1 7/16" x 1 3/4" x 14 ga.	2 5/32" x 2 5/8" x 14 ga.		
	4 Wheel Roller Hangers	1 7/16" Wheel Dia. - 13/32" Stud Dia.	2 7/32" Wheel Dia. - 5/8" Stud Dia.		
	Bottom Guide Channel	1 7/8" x 2" x 1/8"		2 3/8" x 2" x 1/8"	3 1/4" x 2" x 1/8"
	Lock	Marks 3800 Series		Folger Adam 30 Series	
Fasteners	1/4" - 20 M.S.	3/8" - 13 M.S.	3/8" - 13 Torx M.S.		



1059 King Georges Post. Rd Edison, NJ 08837 / (732)-661-2001  
[sales@nkwire.com](mailto:sales@nkwire.com) / [www.newarkwireworks.com](http://www.newarkwireworks.com)

# Newark Wire Works Locks

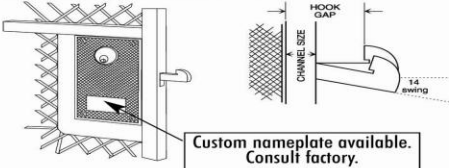
## Hinged Door Locks



- Easily reversible
- Case, cast aluminum 3-5/8" x 6-1/4" x 1"
- Groove: 1/2" wide x 3/16" deep, all sides for wire gate insertion
- 5 pin cylinder(s)
- Lock only, no keeper furnished

Model #	Latch Projection	Channel Size
W3700	1-1/8"	1/2"
W3710	1-1/4"	5/8"
W3720	1-3/8"	3/4"
W3730	1-7/8"	1-1/4"
W3750	1-1/8"	1/2"
W3760	1-1/4"	5/8"
W3770	1-3/8"	3/4"
W3780	1-7/8"	1-1/4"

## Sliding Gate Locks

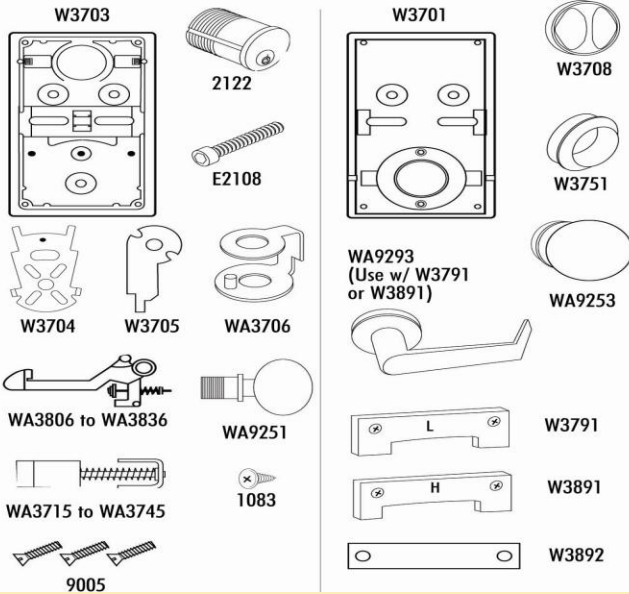


Custom nameplate available.  
Consult factory.

- Easily reversible
- Case, cast aluminum 3-5/8" x 6-1/4" x 1"
- Groove: 1/2" wide x 3/16" deep, all sides for wire gate insertion
- 5 pin cylinder(s)
- Lock only, no keeper furnished

Model #	Hook Gap	Channel Size
W3800	.825"	1/2"
W3810	.950"	5/8"
W3820	1.075"	3/4"
W3830	1.625"	1-1/4"
W3850	.825"	1/2"
W3860	.950"	5/8"
W3870	1.075"	3/4"
W3880	1.625"	1-1/4"

## Parts



Part	Description
1083	Retainer/fork screw
2122	Mortise cylinder
E2108	Cylinder set screw
9005	Case screw
W3701	Cover
W3703	Case
W3704	Fork
W3705	Latch lever
W3708	Turnpiece
W3751	Double cylinder collar with set screw
W3791	Lever stop plate-Swinging gate lock (w/ W3892)
W3891	Lever stop plate-Sliding gate lock (w/ W3892)
W3892	Lever slide cover
WA3706	Latch adapter
WA3715	Latch assembly-1-1/8" projection
WA3725	Latch assembly-1-1/4" projection
WA3735	Latch assembly-1-3/8" projection
WA3745	Latch assembly-1-7/8" projection
WA3806	Hook assembly-.825" gap
WA3816	Hook assembly-.950" gap
WA3826	Hook assembly-1.075" gap
WA3836	Hook assembly-1.625" gap
WA9251	Exterior knob assembly
WA9253	Interior knob assembly
WA9293	Interior lever assembly (with W3791 & W3891)

Gate Locks

